



# HOW TO FIND A DAYCARE IN BC?

HOW TO REGISTER DAYCARE FOR YOUR CHILDREN

# TYPES OF DAYCARE

## LICENSED CARE

Childcare providers must have qualifications such as Early Child Care Educator, Infant Toddler Educator. They also must have

**CLEAR CRIMINAL RECORD CHECK**

**FIRST AID CERTIFICATES DEPENDING ON**

**THE TYPE OF CARE**

Licensed child care facilities **are monitored and regularly inspected by regional health authorities.**

They must meet specific requirements for:

- health and safety,
- staffing qualifications,
- record keeping,
- space and equipment,
- child-to-staff ratios

## LICENSE-NOT-REQUIRED/ UNREGISTERED

The Childcare provider is not registered or licensed, not monitored or inspected.

No qualifications are required - meaning they may or may not have had formal child care training or previous child care experience

1 childcare provider can only care up to 2 children

Childcare will take place in the provider's home

It will be illegal if they have more than 2 children in their care

**PARENTS AND GUARDIANS ARE RESPONSIBLE FOR MONITORING THE CARE AND SAFETY OF THEIR CHILDREN**

**TIPS AND EXAMPLES**



## REGISTERED LICENSE-NOT-REQUIRED

The childcare providers are unlicensed but they are registered with Child Care Resources & Referral (CCRR)

1 childcare provider can only care up to 2 children (age 0 - 12)  
In the childcare provider's own home.

They also must have:

- First aid training
- Child care training courses or workshops
- group liability insurance



## IN CHILD'S OWN HOME

Like a baby sitter or  
nanny

no qualifications needed -->  
Meaning the childcare provider  
may lack of necessary skills,  
training, or experiences

**Parents must decide how they  
monitor and hire the childcare  
provider.**

## **\$10 A DAY CHILDCARE**

This program makes childcare more affordable for families. Families paying no more than \$200 a month per child for full-time enrolment during regular business hours:

<https://www2.gov.bc.ca/gov/content/family-social-supports/caring-for-young-children/childcarebc-programs/10-a-day-childcarebc-centres/10-a-day-centres-list>

# CHILDCARE FEE REDUCTION INITIATIVES

This program is for licensed child care providers to reduce and stabilize monthly child care fees. Families with children 12 and under at participating child care facilities are eligible for the Child Care Fee Reduction Initiative. **Parents do not have to apply.**

**Full-time rates:** Families receive up to \$900 per month per child to reduce parent fees for full-time care.

**Part-time rates:** Children enrolled four hours or less per day receive reductions at 50% of the full-day (over four hours) rate. Monthly fee reductions are also pro-rated for children enrolled fewer than five days per week.

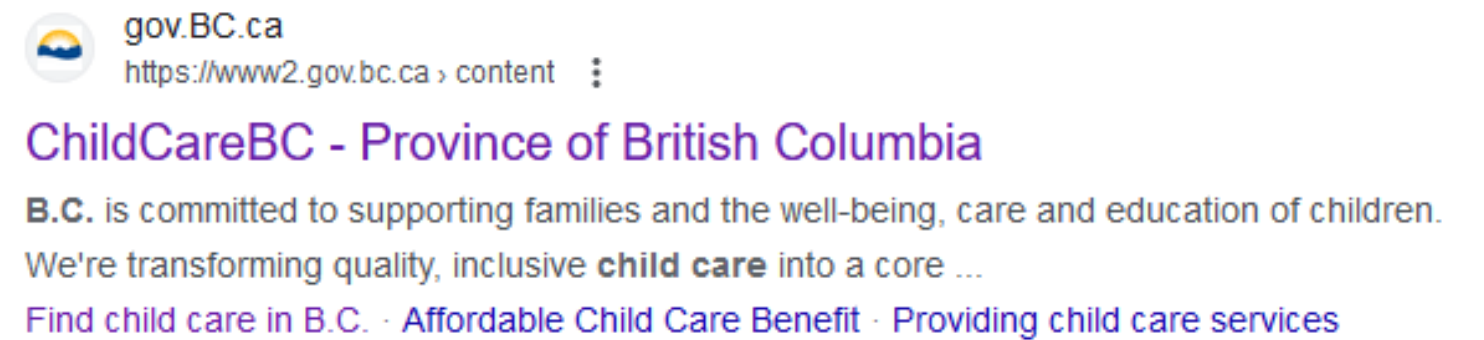
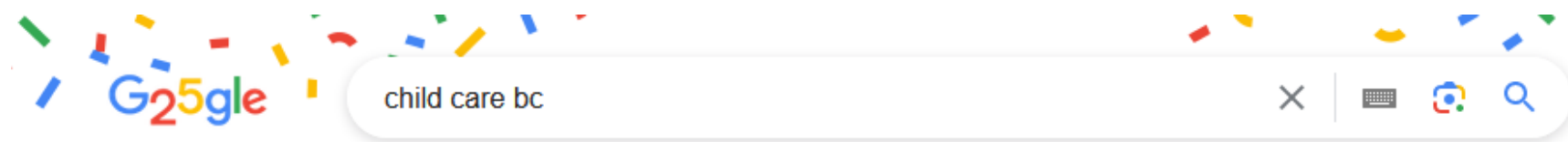
For more info: <https://www2.gov.bc.ca/gov/content/family-social-supports/caring-for-young-children/childcarebc-programs/child-care-fee-reduction-initiative-provider-opt-in-status/information-for-families#Eligibility2>

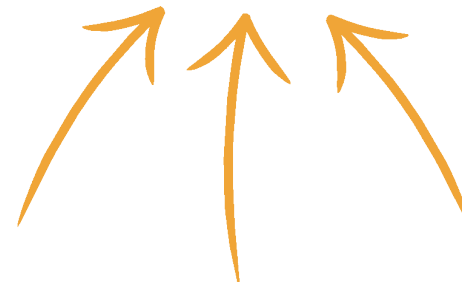


# FIRST STEP: GO TO GOOGLE WEBSITE

  [WWW.GOOGLE.COM](http://WWW.GOOGLE.COM)

THAN TYPE IT IN THE SEARCH BOX :  
CHILDCAREBC



  
  
YOUR RESULTS SHOULD  
LOOK LIKE THIS

# OPEN THE BC WEBSITE

The screenshot shows a web browser window with the URL [www2.gov.bc.ca/gov/content/family-social-supports/caring-for-young-children](http://www2.gov.bc.ca/gov/content/family-social-supports/caring-for-young-children). The page features the British Columbia logo and a search bar. Below the header, there is a section titled "Services and information topics" with six grid items:

- [ChildCareBC programs](#) (Image: Children playing)
- [Information for families](#) (Image: Family sitting together) - This item is circled in orange with a purple mouse cursor icon and a handwritten "CLICK HERE" label with an arrow pointing to it.
- [Information for partners and providers](#) (Image: Classroom setting)
- [Support for early childhood professionals](#) (Image: Teacher in classroom)
- [Communications and engagement](#) (Image: Educational toys)
- [Our Plan: ChildCareBC](#) (Image: Children with painted hands)

<https://www2.gov.bc.ca/gov/content/family-social-supports/caring-for-young-children/childcarebc-programs/child-care-fee-reduction-initiative-provider-opt-in-status/information-for-families#Eligibility2>

OR HERE

## Child Care Map

Find licensed child care facilities in your community.

Search by:

- City
- Distance from your home address
- Program type (under 36 months to age 12)
- Hours of operation (weekday, weekend, overnight, early morning, late night)
- Services offered (meals, additional languages, special needs, Indigenous programming)

Launch the child care map

1

SCROLL THE PAGE  
DOWN

2

AND CLICK THE BLUE  
BUTON THAT SAYS  
“LAUCH THE CHILD  
CARE MAP”

3

OR CLICK  
HERE!





The screenshot shows the 'BRITISH COLUMBIA Child Care Map' interface. At the top, a search bar contains the word 'VICTORIA' and is highlighted with an orange circle and arrow. Below the search bar, the results list shows 342 results for 'VICTORIA'. The list includes various child care centers and schools, such as 'Victoria Children's Centre', 'Our Childrens Centre', 'Castlview Child Care Centre', 'Camosun College Child Care Services - Interurban', 'Camosun College Child Care Services - Lansdowne', 'Springridge Early Childhood Centre', 'Emmanuel Baptist Church Child Care', 'South Park Family Out Of School Care', 'St. Christopher's Montessori School', 'Sir James Douglas Out Of School Club', 'James Bay Community School Day Care', 'Artemis Young Parent Program', and 'West-Mont School'. The map on the right shows the province of British Columbia with numerous blue circular markers containing numbers, indicating the locations of child care services. An orange arrow points from the search bar to the list of results.

THE DAYCARE LIST WILL SHOW UP LIKE THIS

A HUGE MAP LIKE THIS MUST OPEN.

IN THE SEARCH BOX YOU CAN TYPE YOUR AREA'S NAME, OR SEARCH BY THE NUMBERS IN THE MAP.

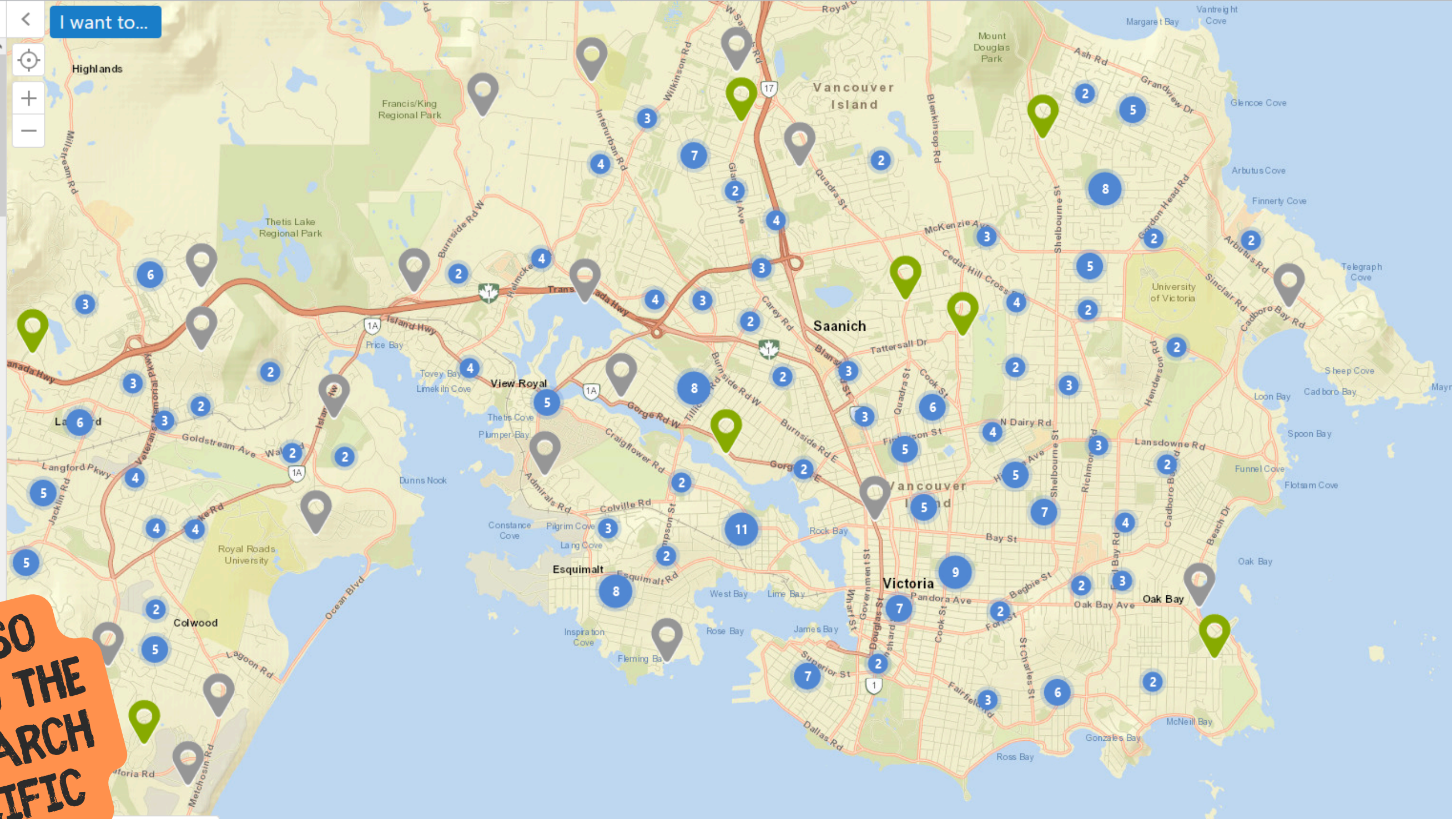




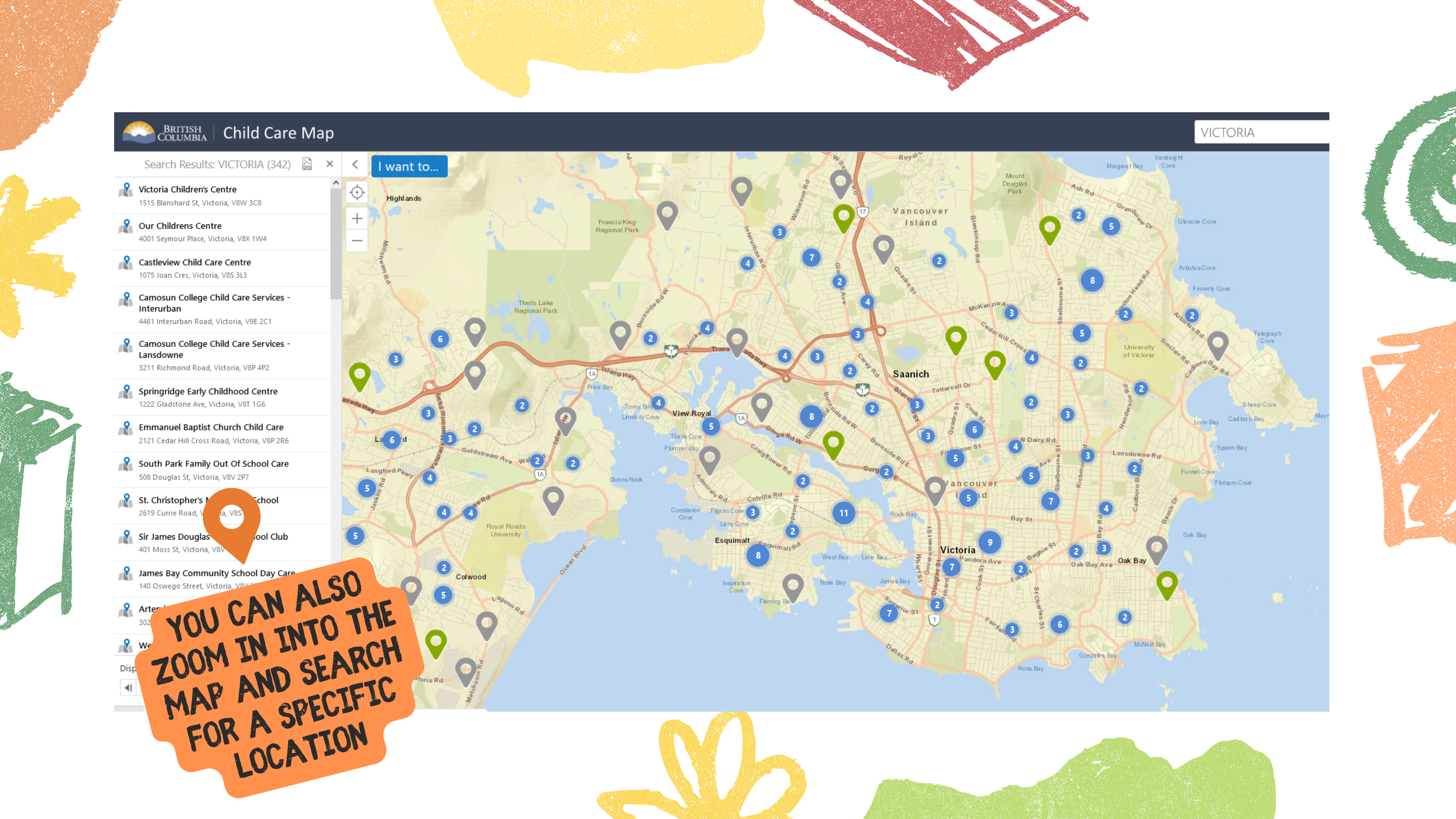
Search Results: VICTORIA (342)

I want to...

- Victoria Children's Centre**  
1515 Blanshard St, Victoria, V8W 3C8
- Our Childrens Centre**  
4001 Seymour Place, Victoria, V8X 1W4
- Castleview Child Care Centre**  
1075 Joan Cres, Victoria, V8S 3L3
- Camosun College Child Care Services - Interurban**  
4461 Interurban Road, Victoria, V9E 2C1
- Camosun College Child Care Services - Lansdowne**  
3211 Richmond Road, Victoria, V8P 4P2
- Springridge Early Childhood Centre**  
1222 Gladstone Ave, Victoria, V8T 1G6
- Emmanuel Baptist Church Child Care**  
2121 Cedar Hill Cross Road, Victoria, V8P 2R6
- South Park Family Out Of School Care**  
508 Douglas St, Victoria, V8V 2P7
- St. Christopher's M... School**  
2619 Currie Road, Victoria, V8S
- Sir James Douglas... School Club**  
401 Moss St, Victoria, V8V
- James Bay Community School Day Care**  
140 Oswego Street, Victoria, V8V
- Arter...**  
302
- We...**
- Disp...**



**YOU CAN ALSO ZOOM IN INTO THE MAP AND SEARCH FOR A SPECIFIC LOCATION**







# Child Care Map

Search Results: VICTORIA (342)

**Victoria Children's Centre**  
1515 Blanshard St, Victoria, V8W 3C8

**Our Childrens Centre**  
4001 Seymour Place, Victoria, V8X 1W4

**Castleview Child Care Centre**  
1075 Joan Cres, Victoria, V8S 3L3

**Camosun College Child Care Services - Interurban**  
4461 Interurban Road, Victoria, V9E 2C1

**Camosun College Child Care Services - Lansdowne**  
3211 Richmond Road, Victoria, V8P 4P2

**Springridge Early Childhood Centre**  
1222 Gladstone Ave, Victoria, V8T 1G6

**Emmanuel Baptist Church Child Care**  
2121 Cedar Hill Cross Road, Victoria, V8P 2R6

I want to...

## Victoria Children's Centre

Info Programs Services

1515 Blanshard St, Victoria, V8W 3C8  
[250-380-2484](tel:250-380-2484)  
Licensed Group Child Care Facility

Hours of operation: Weekdays  
Programs: Under 36 Months  
[Health Authority Inspections](#)

[Printable PDF](#)

THAN YOU CAN  
CHOOSE A CENTRE  
AND CLICK TO SEE  
MORE  
INFORMATION



## Victoria Children's Centre

Info Programs **Services**

| Program              | Has Vacancies |
|----------------------|---------------|
| Under 36 Months      | N             |
| 30 Months to 5 Years | N             |
| Grade 1 to Age 12    | N             |
| Licensed Preschool   | N             |

(Vacancies updated as of 2023/09/22)

Participating in the Child Care Fee Reduction initiative

[Printable PDF](#)

## Victoria Children's Centre

Info Programs **Services**

Meal Services: Not offered  
Pick-up Services: Not offered

Additional Languages: None

Accommodates special needs

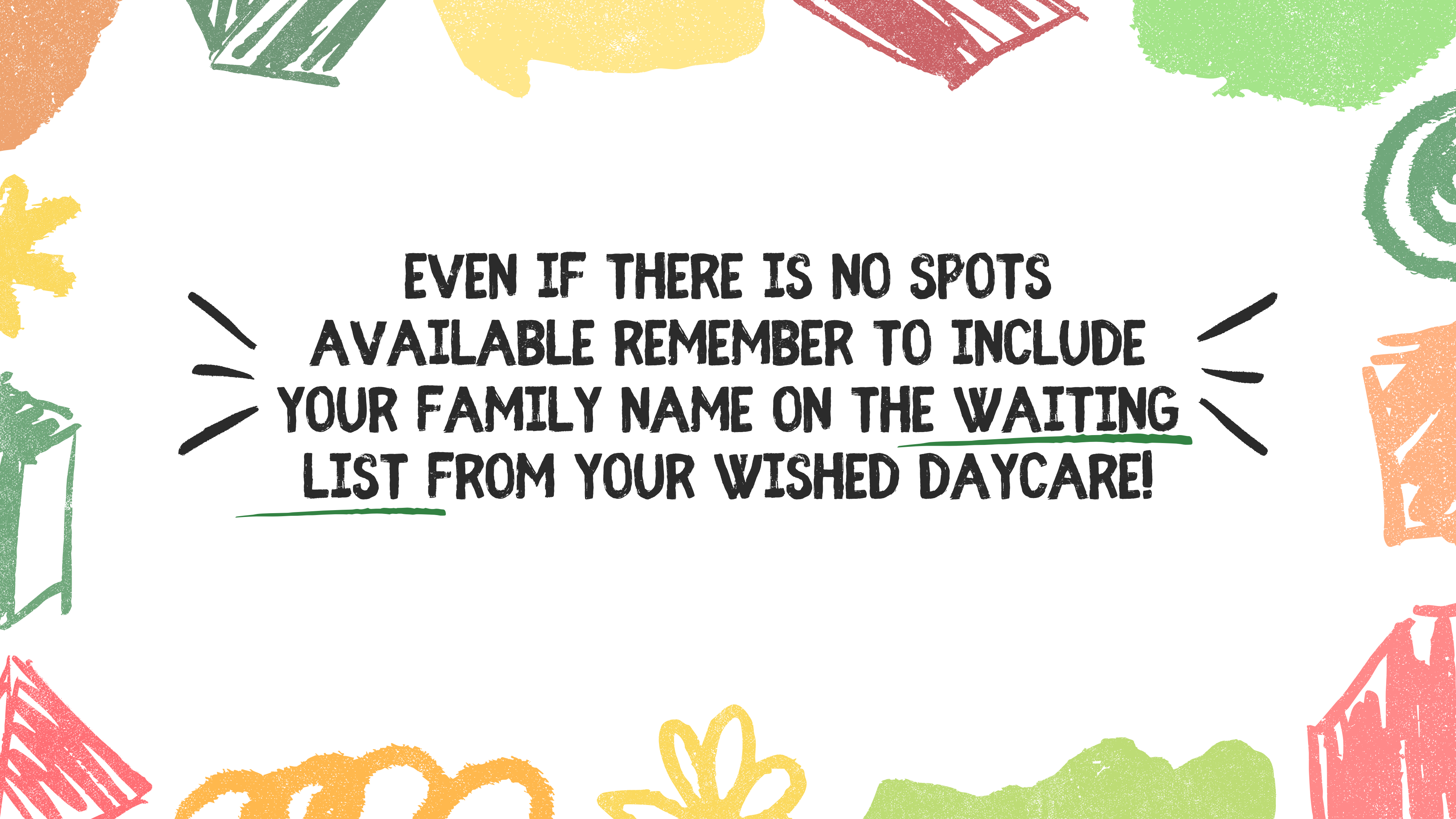
**ECE**

**ELF**

[Printable PDF](#)

You can also print a PDF version of the information

You can change tabs and see available spots (N = No spots available) and more information about complementary services



**EVEN IF THERE IS NO SPOTS  
AVAILABLE REMEMBER TO INCLUDE  
YOUR FAMILY NAME ON THE WAITING  
LIST FROM YOUR WISHED DAYCARE!**



## TIPS:

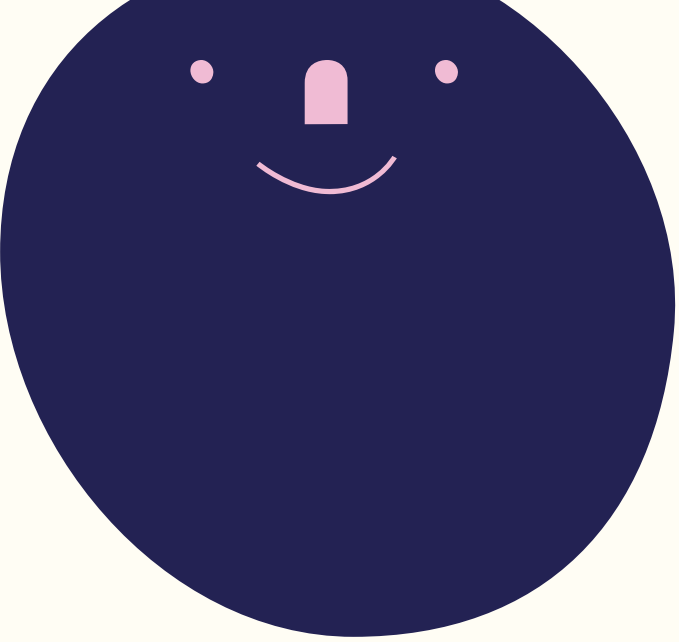
1. Write a list of daycare you are on waitlist
2. Frequently check-in with them to check the waitlist status
3. Don't focus on 1 place, keep eyes for all available daycare near you
4. Networking: friend's referrals.
5. **Connect with Child Care Resources and Referrals (CCRR)**
  - **Victoria: <https://www.childcarevictoria.org/>**
  - **Sooke/Westshore: <https://www.sfrs.ca/programs/child-care-resource-and-referral-ccrr>**



The page features a decorative border with various colorful, abstract shapes and patterns. At the top, there are orange, green, yellow, red, and green shapes. On the left side, there are yellow, green, and orange shapes. At the bottom, there are orange, yellow, green, and red shapes. On the right side, there are green, orange, and red shapes.

## TIPS (CONTINUED):

6. keep good communication with the daycare manager/supervisor/staff.
7. Visit the daycare, know about the services they provide, how their system works,
8. Go through the contract before signing, understand their policies.



# CONTACT INFO

